

## Merging & Conforming lists on Pogle Platinum (v421 sw)


### Merging

List merging is based on the Platinum Timeline, which is generated using the Record In & Out times. If two lists are merged then put simply where the timecodes match then the new data will be used. Where the timecodes don't match then it will add new events.

To merge two lists you will have your list that you wish to merge into open and to be active as shown below:



Then using the vault select the list that you wish to merge, you can now do one of two actions to merge the lists, either:-

1. On the selected EDL in the vault, left click and hold down.  A pop up menu will appear; one of the options will be to Merge lists, and click on this. The selected EDL will now be merged with the active EDL.
2. On the selected EDL in the vault, left click and drag to the selected active list, the selected EDL will now be merged with the active EDL.

### Conforming

To conform two lists uses the Source In & Out time and Reel names. This means that two lists can be conformed when they have different record times (i.e. different times for the Platinum timeline); something that merging couldn't do directly or easily.

### Conform Functions

Open the source Platinum list that contains EDL information that you wish to record from, when looking in the vault this will be denoted by a red circle in the top right as shown below. (Note the old method to denote EDL information was to have EDL written at the side of the list.) For the next example we will open the List at the top left named 'mixed'.



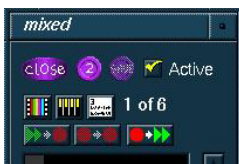
Open the required source Platinum list you will then see the panel below.



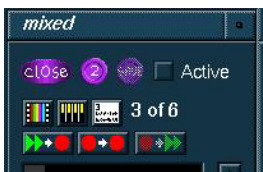
You will see when looking at the top of the mixed Platinum list that there are three purple buttons, these are to close the panel, generate a clone Platinum List (which can speed up copying events etc and will mirror any changes made to the original Platinum list) and lastly 'save' function will save the list.

The icons below that will then control what the Platinum list will display (mini pics, graphical info & notes).

The icons at the bottom then control the functionality of the conform function, as shown here the active (right hand one) will 'push' (send) a copy of the named 'mixed' record Platinum list (original source list) to an appropriate open source list or create a new source list if there isn't one open.



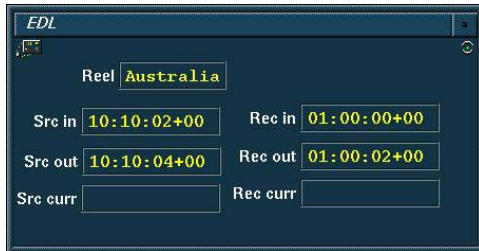
The other two conforming icons would be used when the 'mixed' Platinum list (original source Platinum list) was inactive this is normally achieved by having one of the source lists made active. We can have multiple source lists and up to two record lists open and able to pull information from any of these source lists or the other record list. The centre conform icon (the red circle to red circle) means that we are going to pull the conform from the other record list that is open to the one that you click on the conform icon. **Note** if you have more than two record lists open then the conform will abort telling you that multiple record lists are open, to continue you will need to close all but the record list you are pulling the information from and the record list you want to update. To conform from one or more open source lists click on the left hand conform icon this will pull the conform from all source lists that are open and contain valid source info.



## To Conform two lists

Open the required original Platinum List that was created with EDL information, as stated earlier this is easily recognisable by the red circle in the top right of the List icon when viewed through the vault. In the following example we are going to be using a Platinum List called 'Mixed' as the original source List.

There are then two EDL panels that can be used in conjunction with the Platinum List, these are the EDL panel and the EDL setup panel as shown below.



The EDL panel information will change according to which scene is selected in the Mixed Platinum List. This information consists of the original source reel name, the Source In and out points plus the Record deck In and Out points. When actually performing a Conform the Source and Record 'current' timecode will be active thereby providing some feedback as to exactly where in the Conform you currently are.



The EDL panel provides the ability to set the size of the 'Handles' and how much Black might also be required. The handles are the amount of frames you want to extend the original scene by both at the beginning and end. The amount of black frames set will set how many black frames you are going to separate the conformed scenes by

Therefore in the example shown we are going to be conforming a scene from a source reel called Australia, where the selected scene is 2 seconds long, this info is obtained from the EDL panel. Note we will actually conform **all** scenes that were on the original Australia reel when we perform the Conform. This conform will extend all the scenes by 25 frames at the beginning and end of each scene (this being the handles) with 50 frames of black between each scene. If the handles or the black separation are not required then simply either set them to off or set the frames to 0.

The download will automatically send a copy of the Conform as an EDL to your Virtual Disk server, where supported.

If we put this all together we will open a Platinum list called 'Mixed' as our original list and look at the EDL panel and EDL setup panel as well, as shown on the next page.



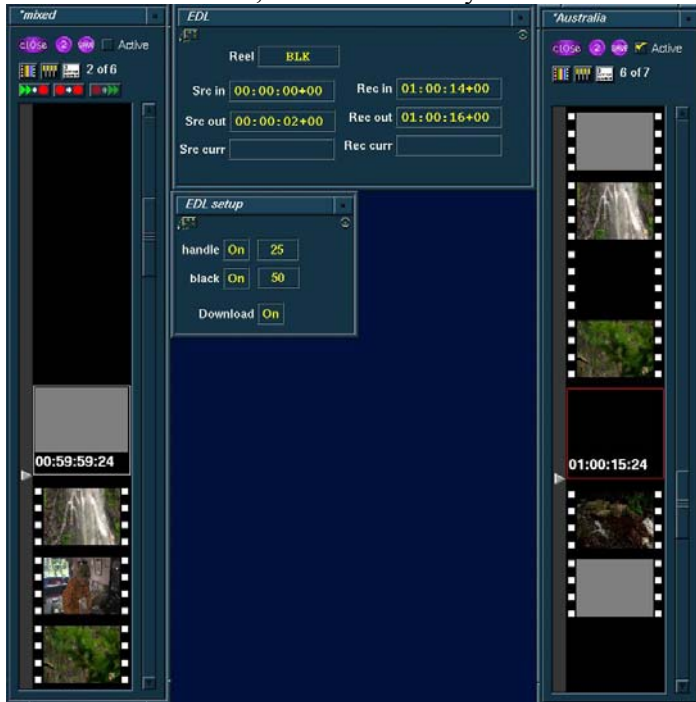
As you can see above we have opened the Platinum List 'Mixed' as an active list, by opening the EDL and EDL setup panels we can obtain some feedback of the selected scenes within the active 'Mixed' list. Here we can see that the first scene is from a reel called Australia, with the scene being 2 seconds long. We could simply push this information into a new Platinum list, however in this case although there are five scenes in this list, they are actually from two different reels, if we click on scene two will then find that scene originated from a reel called 'Mike', as shown below.



Again you will notice that the selected scene is 2 seconds long, but this time it originates from a different source reel. So to carry out a conform and push the information from the 'Mixed' Platinum list we need to decide which source reel we want to push this information from 'Australia' or 'Mike'. Perhaps more simply we could create two new Platinum lists one based on the 'Australia' reel the other based on the 'Mike' reel.

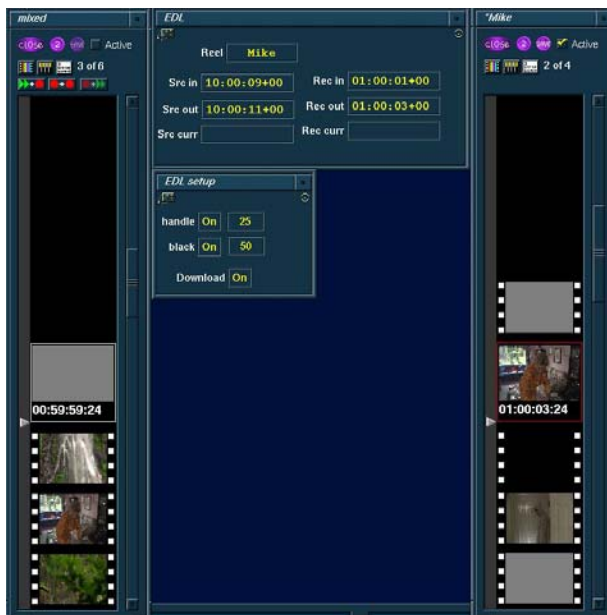
**Note:** When pushing the information if there is a similar Platinum list already it will be pushed to that, however if no such current list exists then one will be created, as shown next. To do this go back to scene 1 of the 'Mixed' list (top picture), ensure that the list is active, then select the **push**

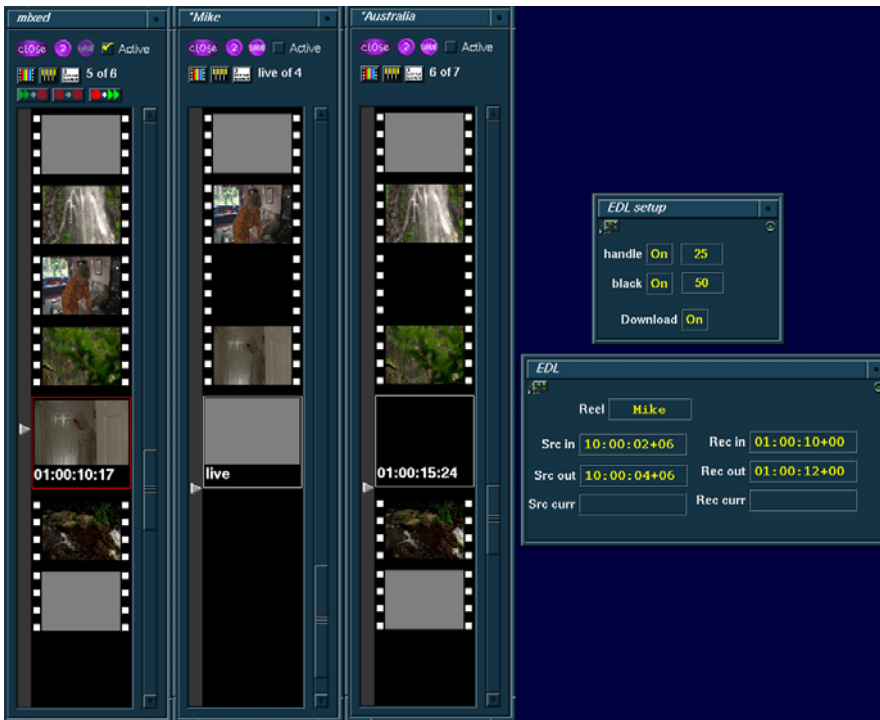
icon (red circle to Green arrows on the right hand side), this will push all the 'Australia' reel scenes into a new list, and automatically make the new 'Australia' list active as shown below.



The result, on the left we have the original 'Mixed' Platinum list from this we have extracted the 'Australia' reel scenes, where we could re-grade, resize etc. On the 'Australia' Platinum list each scene has had a handle of 25 frames added at the beginning and end, with 50 frames of black between each scene. You will notice that the new 'Australia' Platinum list is active and in the original 'Mixed' List the conform icons have now changed to reflect the fact that the original 'Mixed' record list is now inactive.

If we then re-select the original 'Mixed' record list as active, select the second scene from the source 'Mike' and push this conform we will end up with a similar arrangement of each scene having a 25 frame handle at the beginning and end with 50 frames of black between scenes, a new source list called 'Mike' that is then activated – shown below.

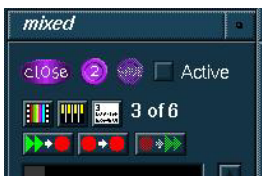




This has been combined above and we have the original 'Mixed' list where two source lists have been conformed from this, as described previously, these source lists are 'Mike' and 'Australia' respectively.

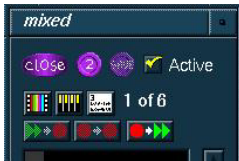
## Synopsis

Record lists are created with the timeline from the destination side of an EDL, this is the normal operation when the EDL is clicked on via the Black Hole Browser in the Platinum. Source lists can be created with the timeline from the source side of an EDL. This is done from the 'Convert EDL source lists' option in the EDL pop-up menu – selected via Black Hole Browser > Virtual > and then left click and hold down on the required EDL.



The left conform icon 'pulls' corrections from any open source lists into this record list, the middle conform icon would 'pull' corrections from another open record list into this record list, remembering that if you have more than two record lists in total open it will abort this conform due to the fact that you have multiple record lists open. **Note** you can only have a maximum of two record lists open for this conform from a record list to another record list to work, even if you select the desired record list to conform from as 'active', with more than two in total open it will abort the conform!

As can be seen above if the record list is not active (as shown) then you can pull a conform from another list, i.e. the left and middle icons can be selected.



The right icon will push corrections from this list into an open source list, or it will create a list if there is not an appropriate list open. The right 'push' conform icon can only be selected when the record list is made active.

Essentially the Active list cannot be changed with the conforming options, you can either pull into a non-active list, or push from an active list.

Normally only one of these options would be needed for a particular task, in the example used previously where there was a mix of two reels in the record list the middle icon would probably be most appropriate, thereby updating a new cut from a previously correct cut.

The 'push conform' from a record list to update a source list appropriate to the current event (the event that you are sitting on in the active list), so as seen below we are sitting on scene 1 from reel 'Australia', therefore if we push conform this to a source list it will either update an open source list called 'Australia' with all the corrections from this active list that apply to 'Australia'.

If there is no 'Australia' list open, a list will be created with extended (handles) versions of all events that come from reel 'Australia' in the active record list.



This option is probably most useful when the sources are on a Quantel iQ virtual disk recorder, in this case the Platinum would tell the iQ to display the new (Australia) list when it is made active.

